

**JANUS®**

A close-up photograph of a precision industrial machine, possibly a lathe or mill, featuring a complex arrangement of polished metal components and a rotating spindle. A hand in a white lab coat is visible in the lower foreground, pointing towards the machine. The background shows a dark, industrial setting with structural elements.

Production since 1980



We support world biggest companies



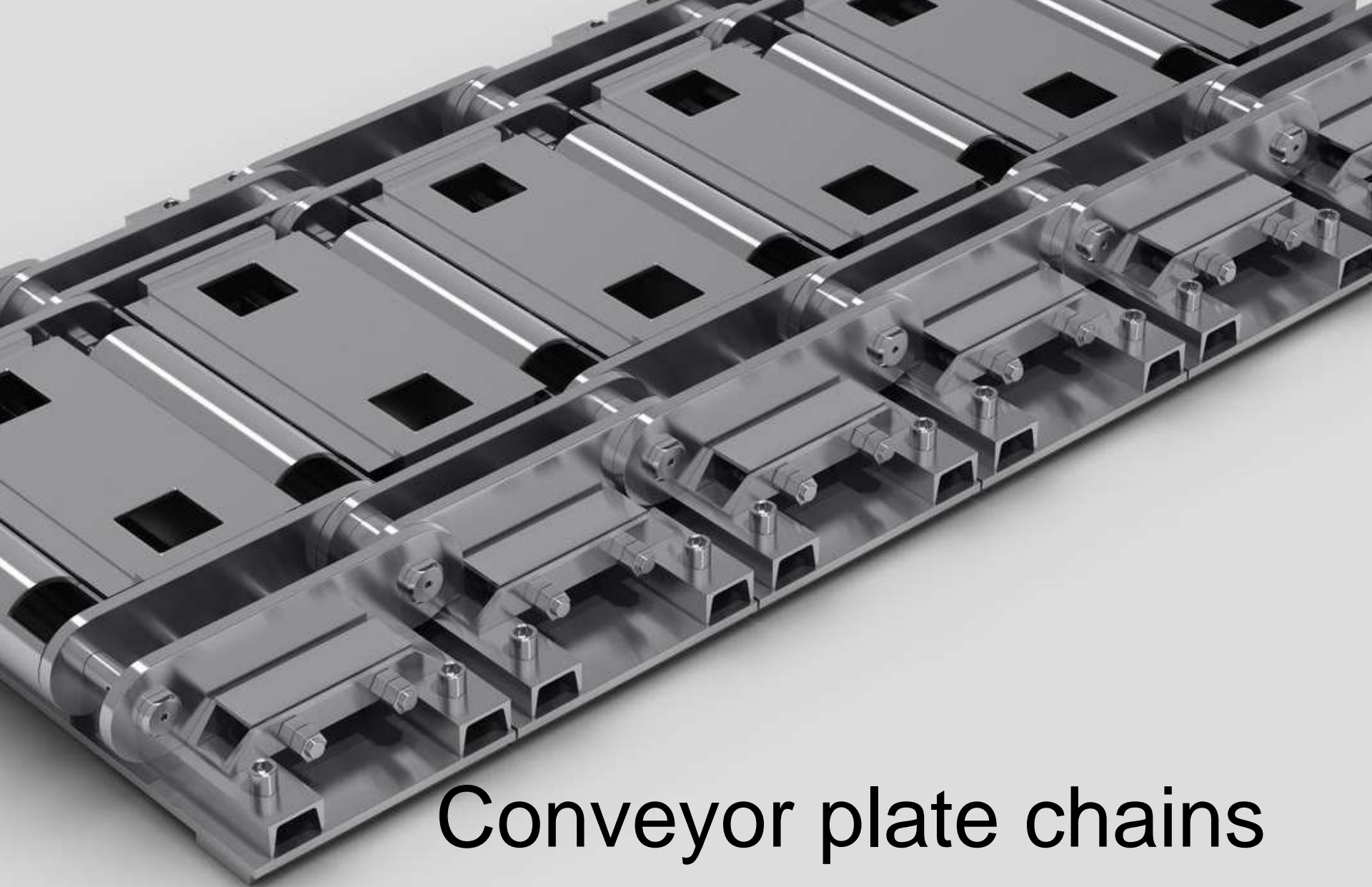
A close-up, low-angle shot of a welder's gloved hands holding a welding torch. The torch is positioned against a large, dark metal structure, and a brilliant, intense light emanates from the point of contact, surrounded by a dense spray of bright orange and yellow sparks that radiate outwards. The background is dark and out of focus, emphasizing the welding process.

Over 1 million of fulfilled orders

# Chains

For special orders

**We offer:**



Conveyor plate chains





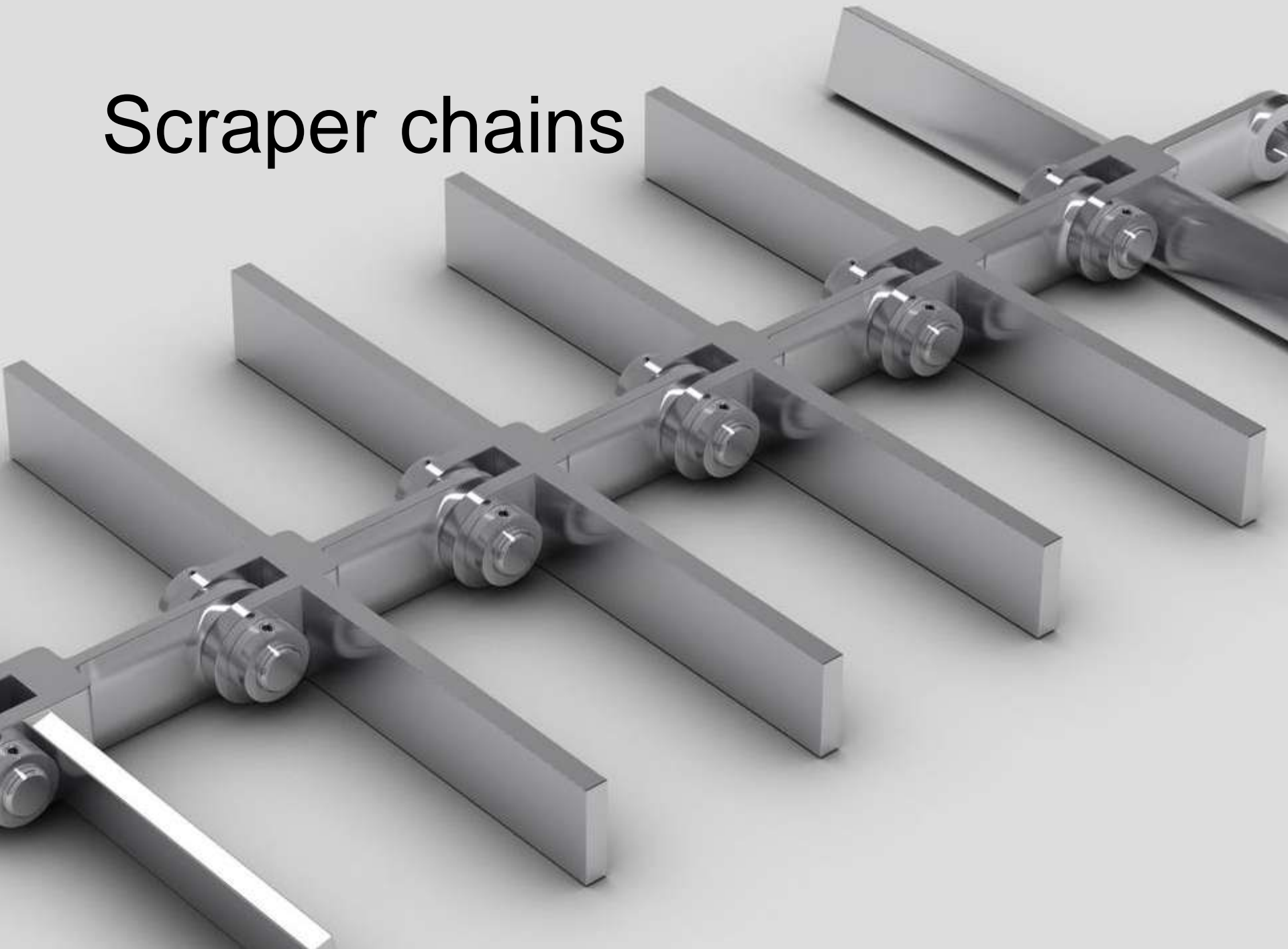
Mesh conveyor chains





Lifting conveyor chain

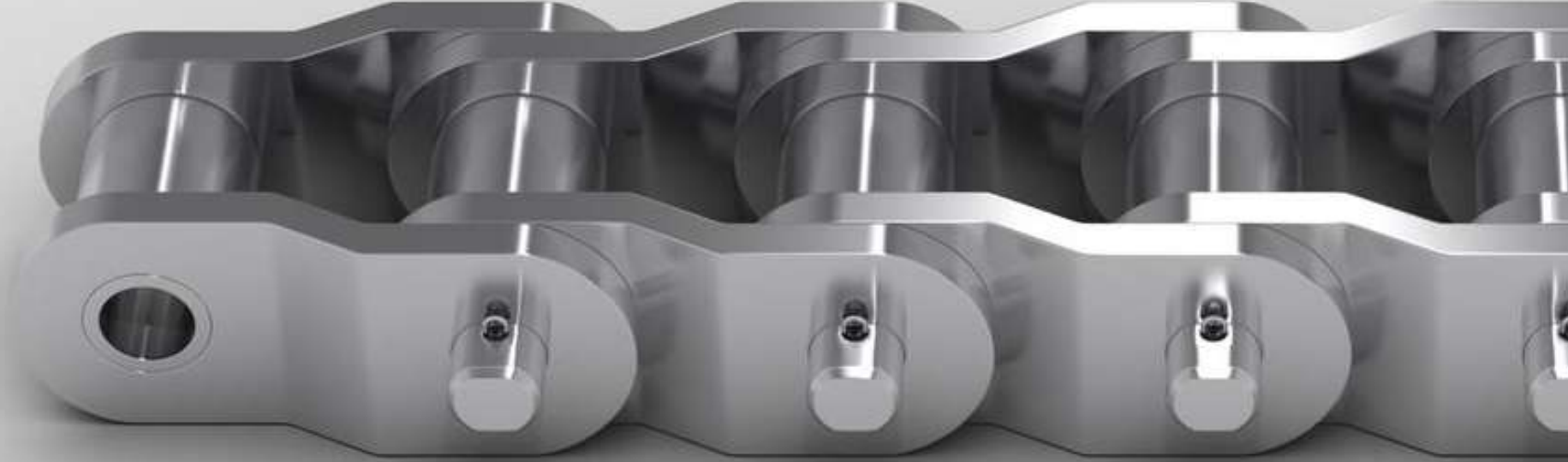
# Scraper chains





Special conveyor chains





Roller chains with REX-plate  
type



**REDLER type chains**

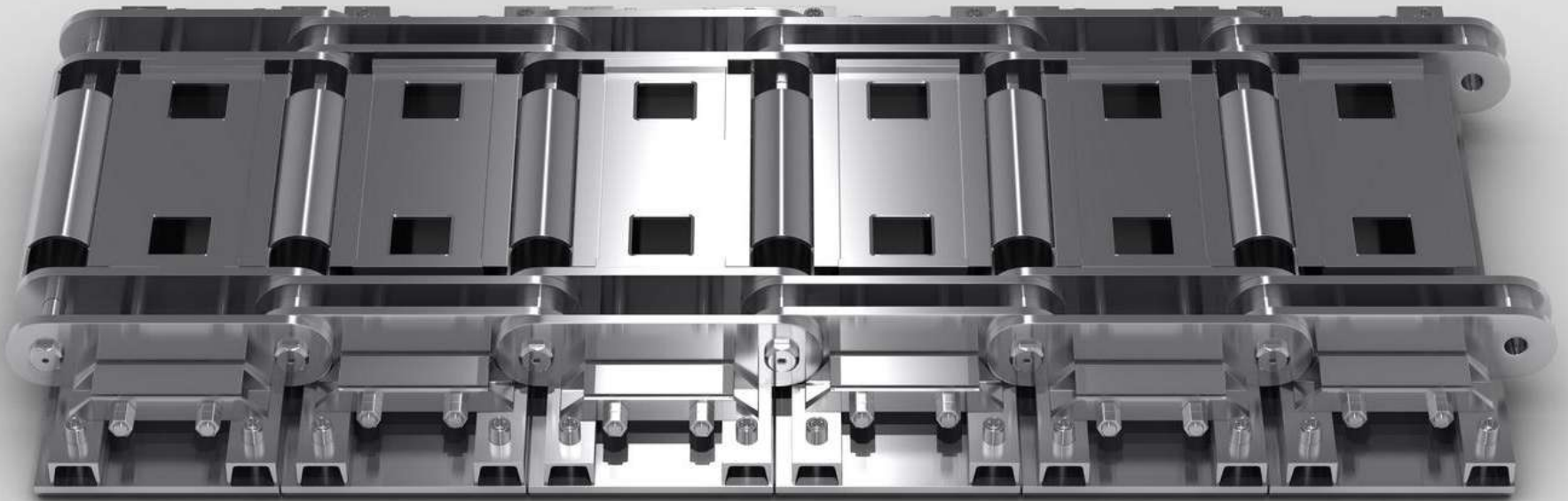
We produce our chains  
**according to:**  
norm DIN and PN

or according to the clients'  
technical documentation



We produce chains with pitch  
up to 600 mm

Plate conveyor chains

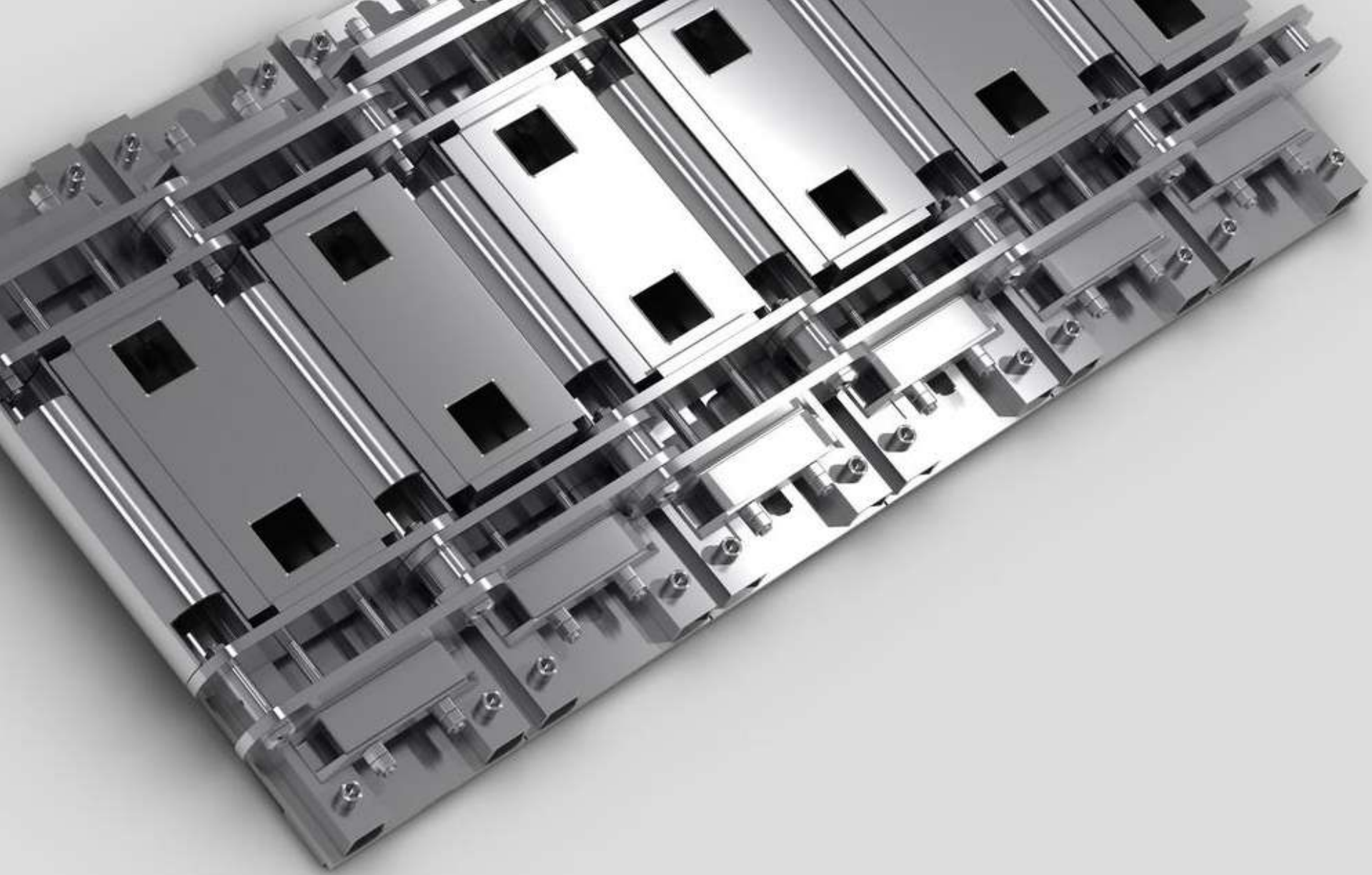


Chains of this type can be used to transport different kind of materials and products





This kind of chains are used to transport heavy loads



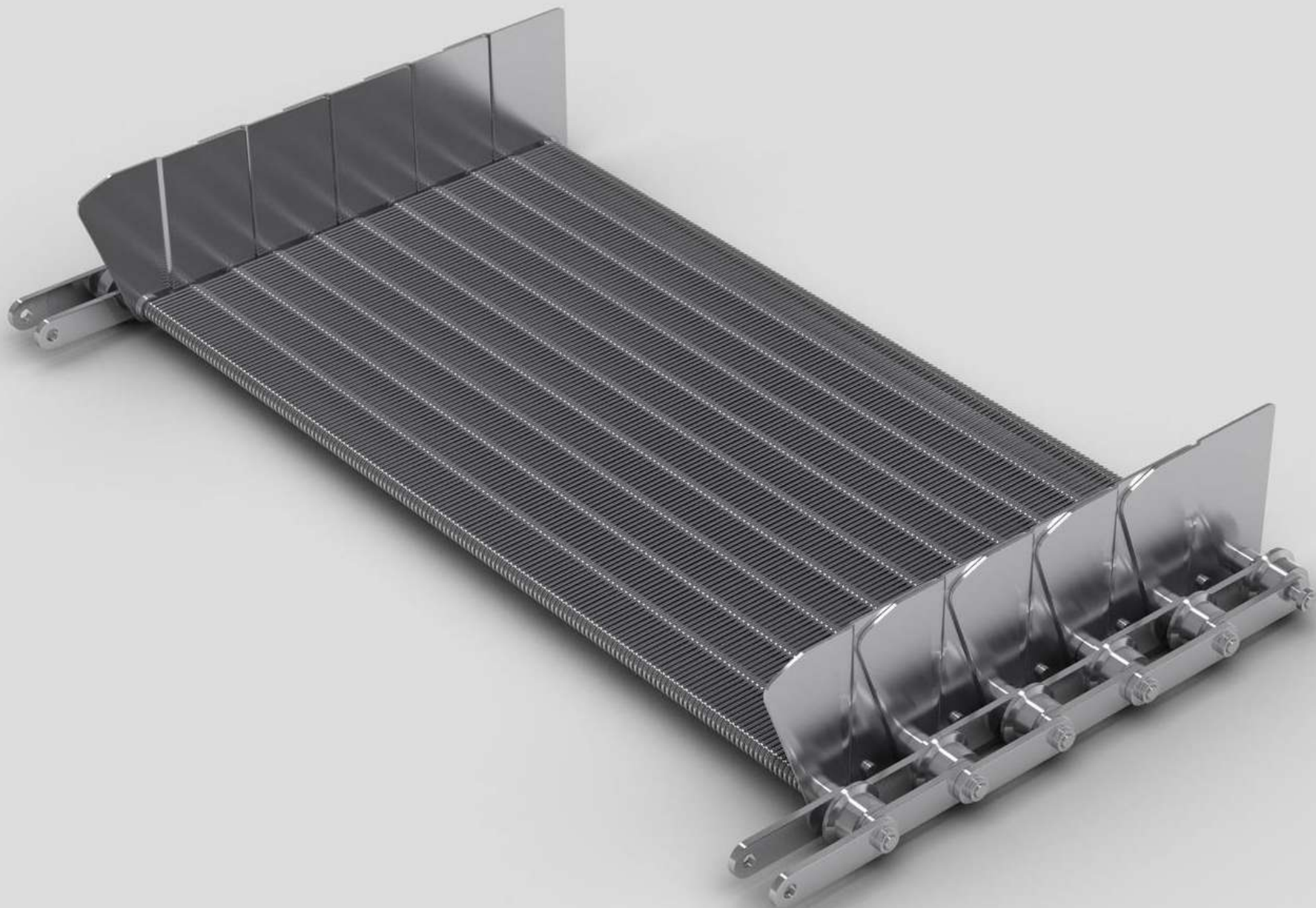
Perfect – if you want strength and durability

# Mesh conveyor chains



Made of high durability type of steels





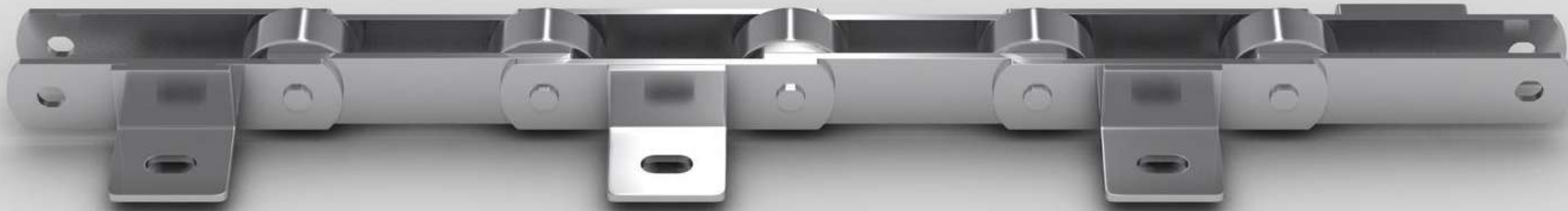
Ready to work in high temperature





Ready to work in acidified, alkaline or chemical aggressive environment

Lifting conveyor chains



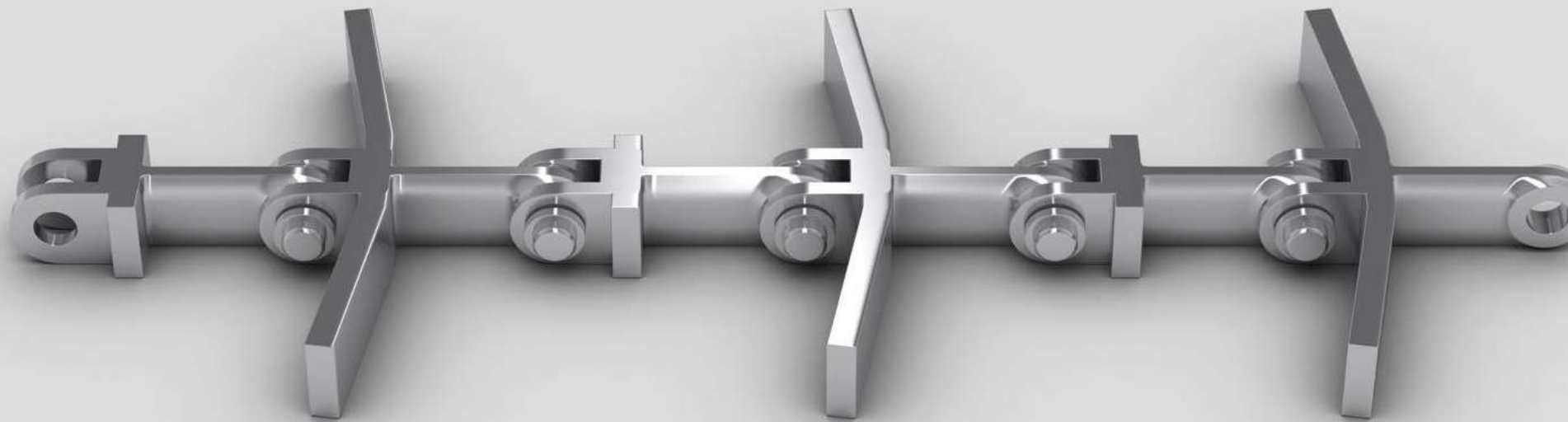
This kind of chain is mounted under or sideways of a rubber tape.



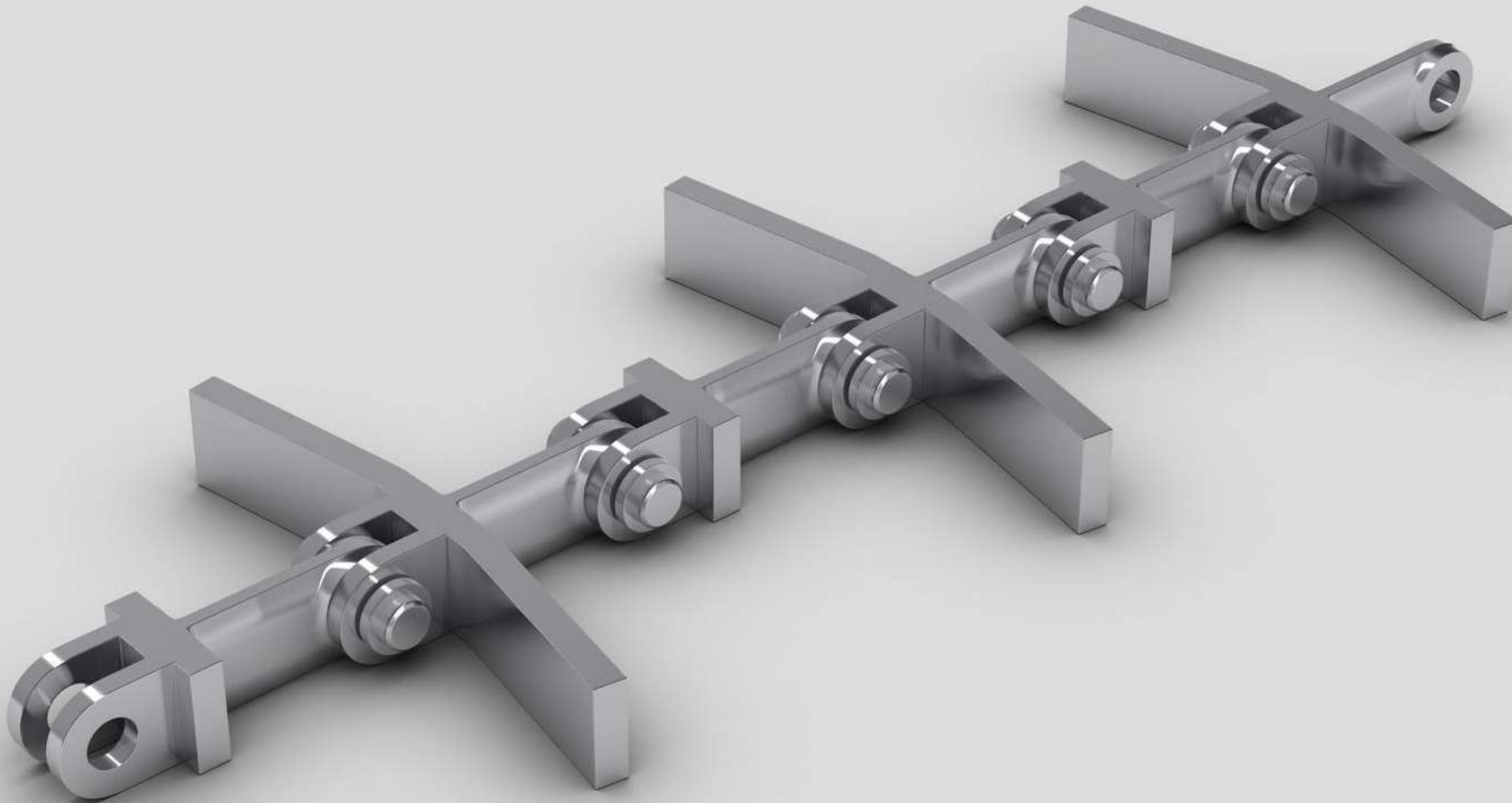
Dimensions and a type of rubber tape depends of client's demand

# Scraper chains

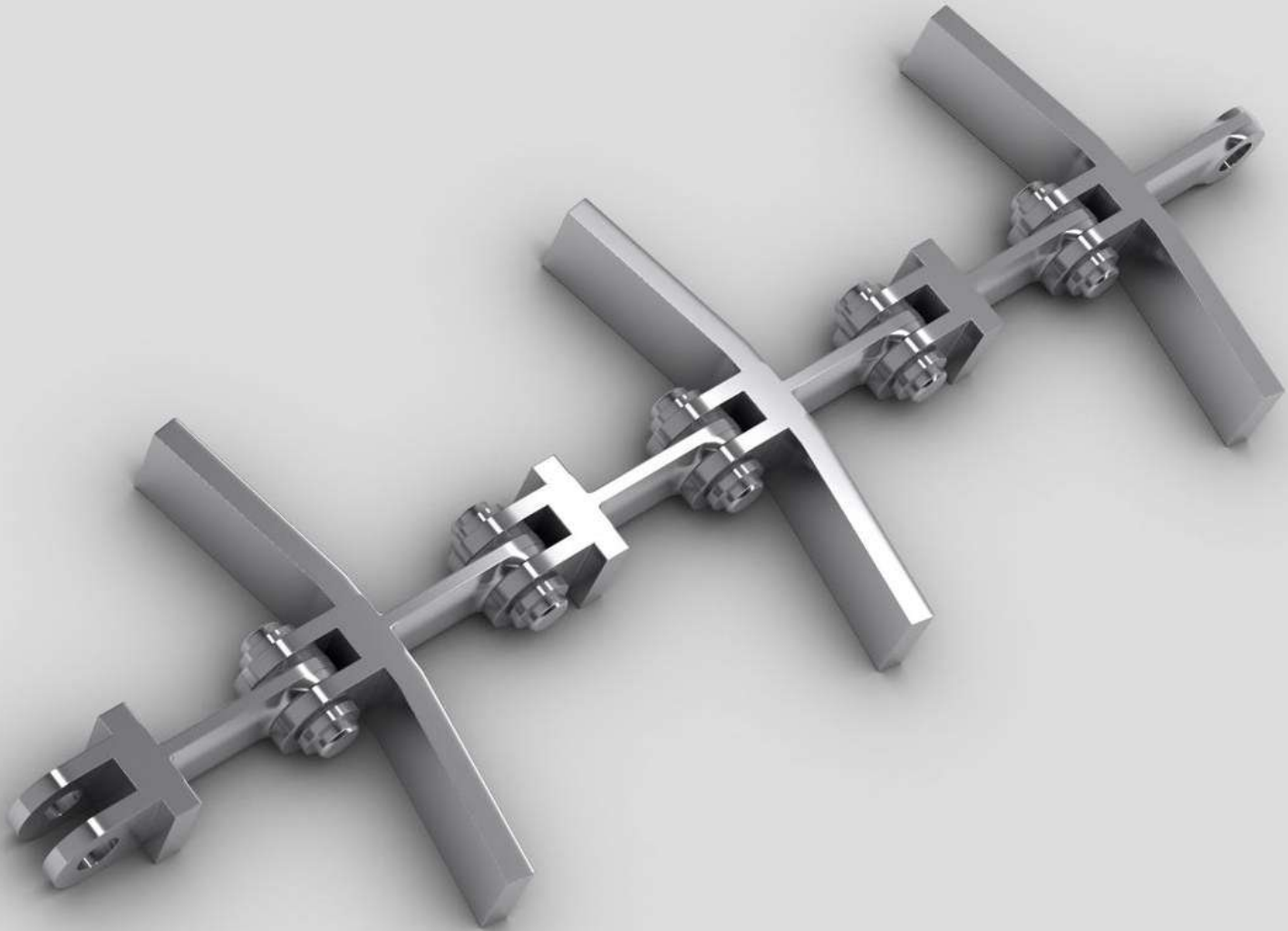




Shape of a scraper depends on client's demand



This kind of chain is made of heat treated steel to obtain a proper hardness



Chains are produced from highest quality certificated materials

# Special conveyor chains

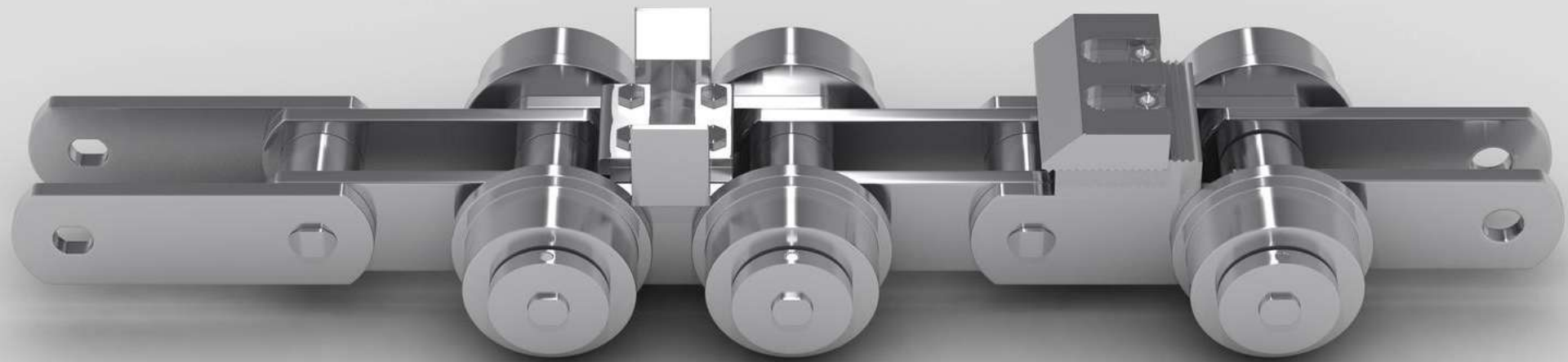


All chains are made in Poland

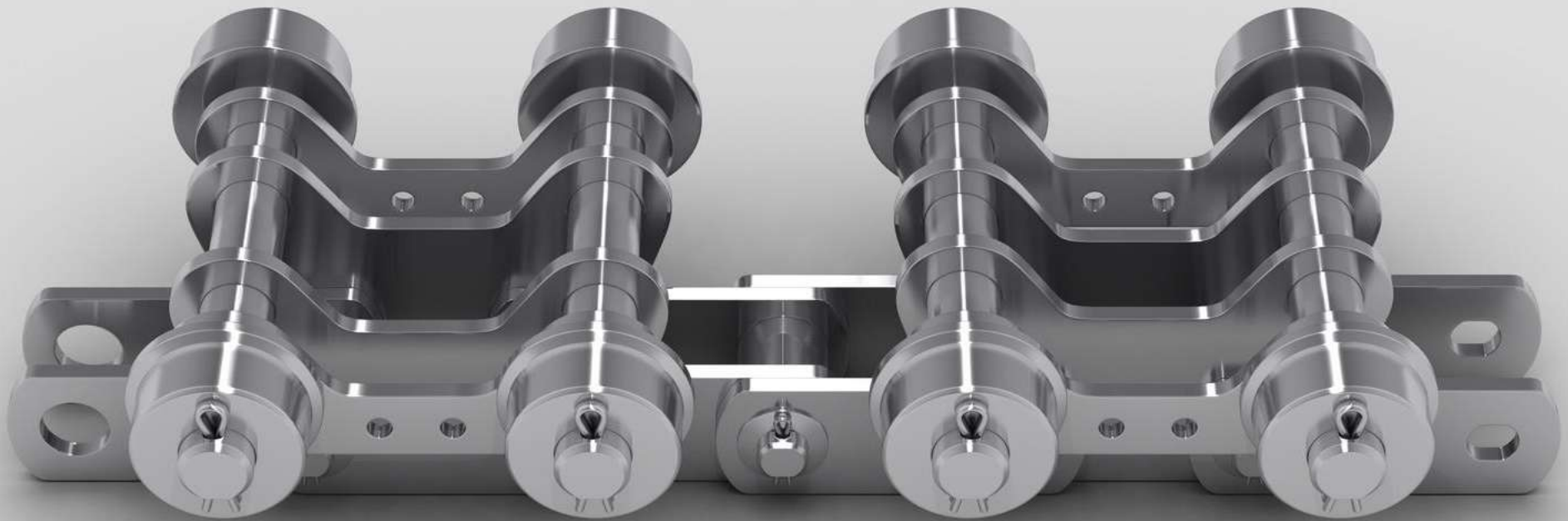




Chains are produced according to the client's documentation or our own projects



Our Technology Office can give our clients a proper technical advice to help in choosing the best solutions

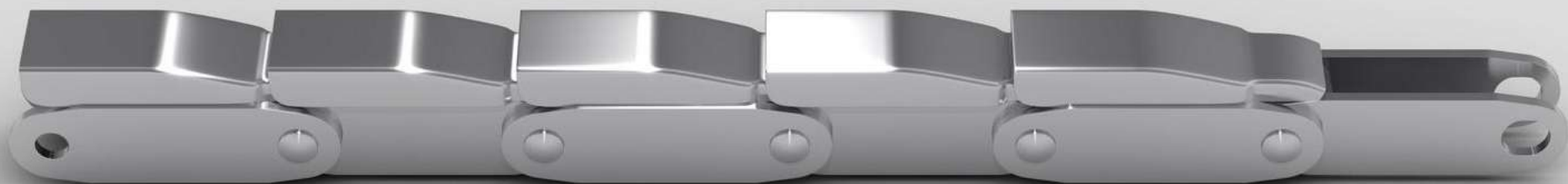


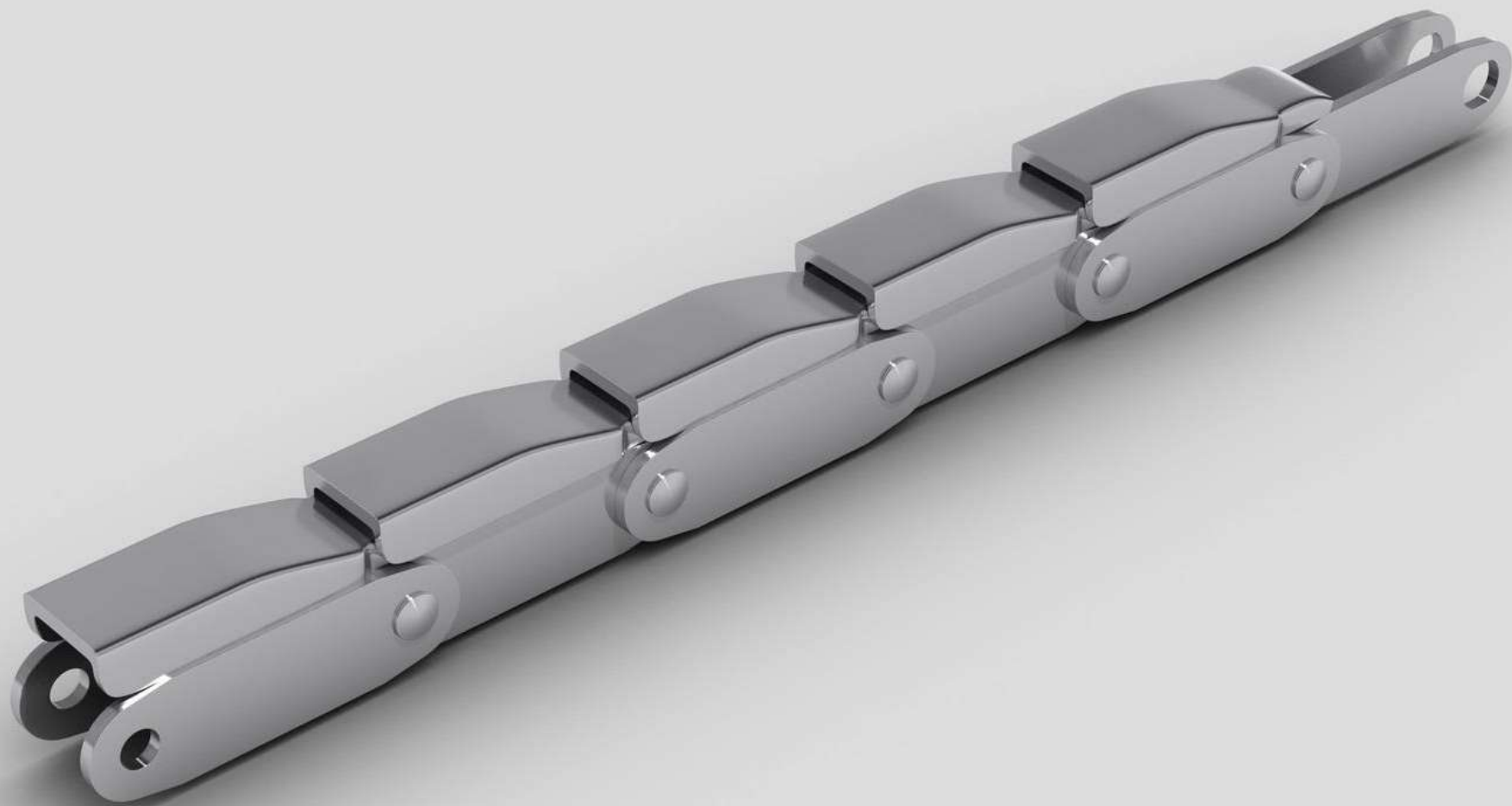
Best materials are used to guarantee long durability



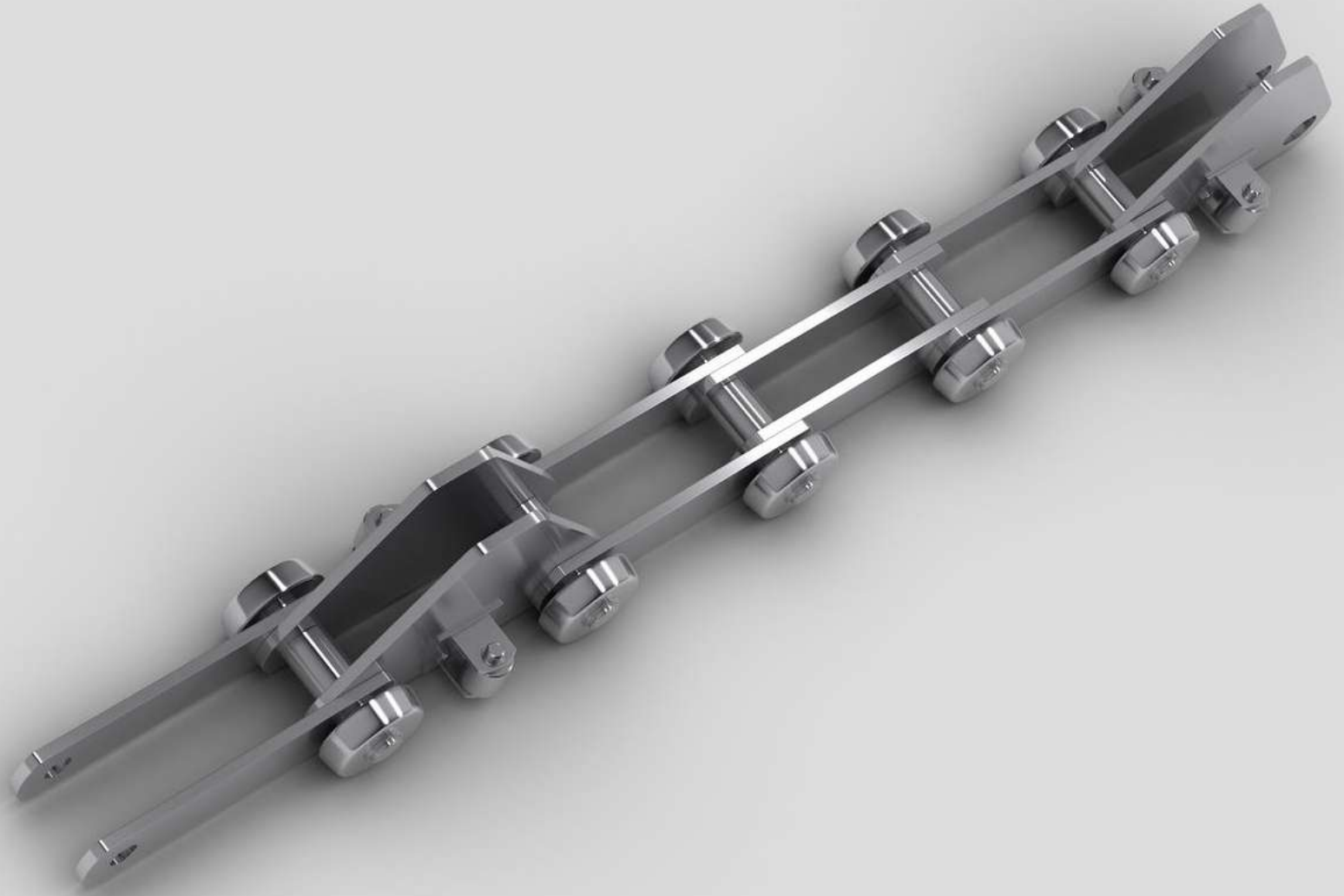


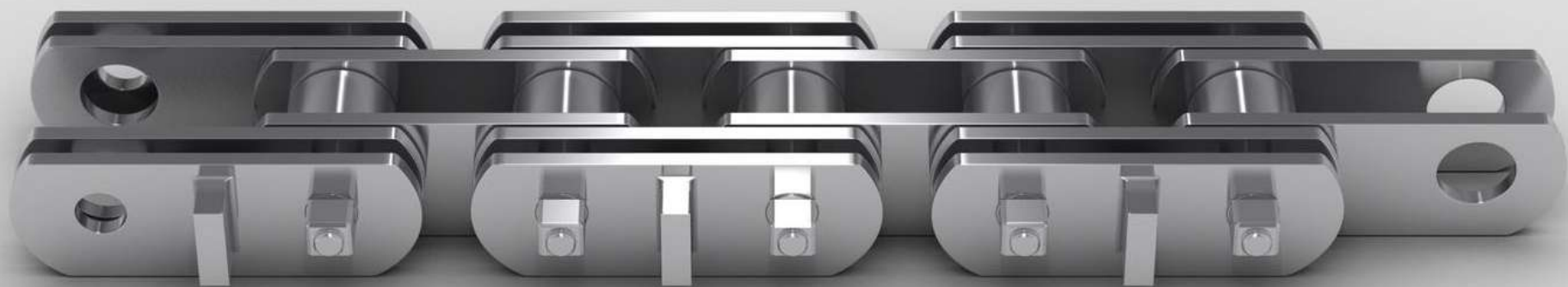












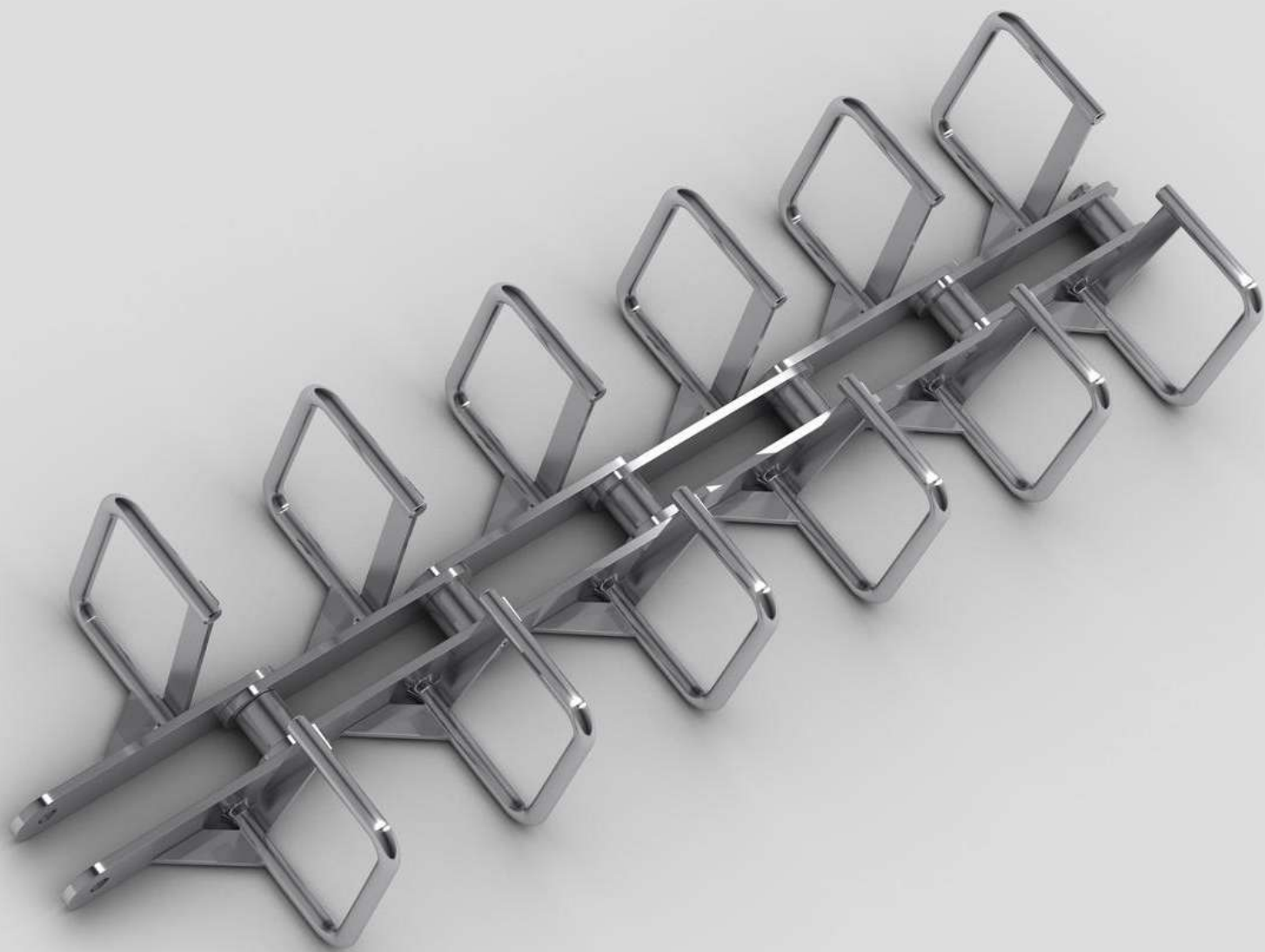






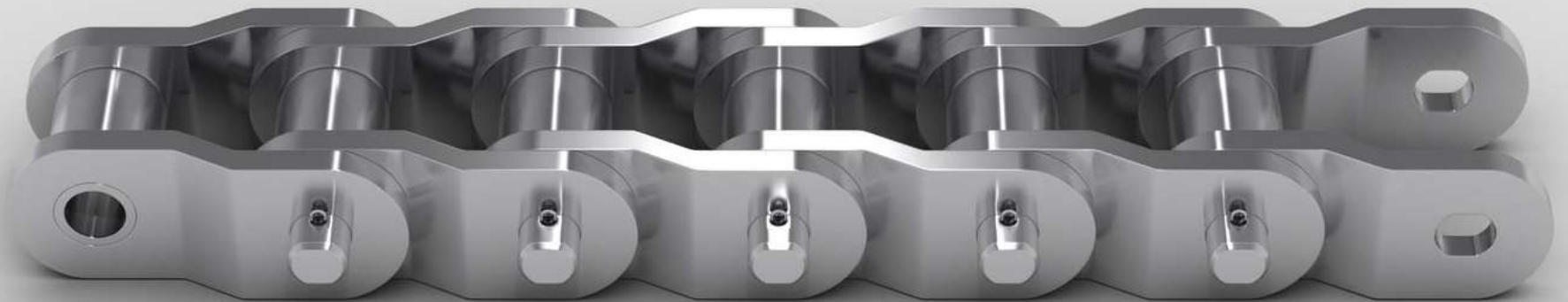








# Roller chains with REX-type plates

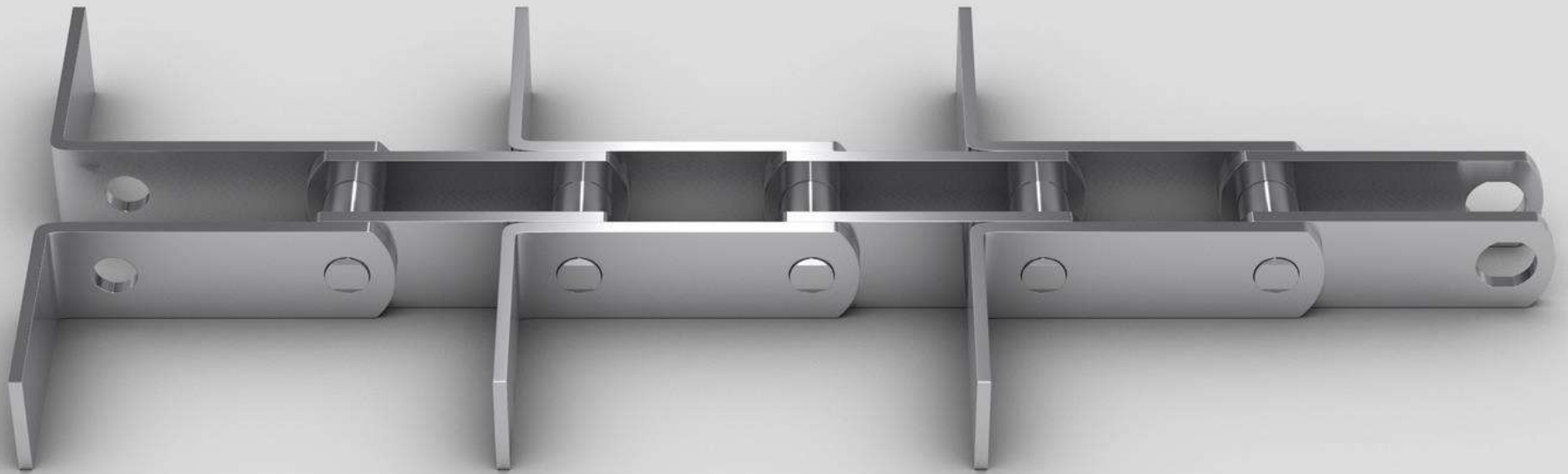


This chains can be used in different kind of sorting machines



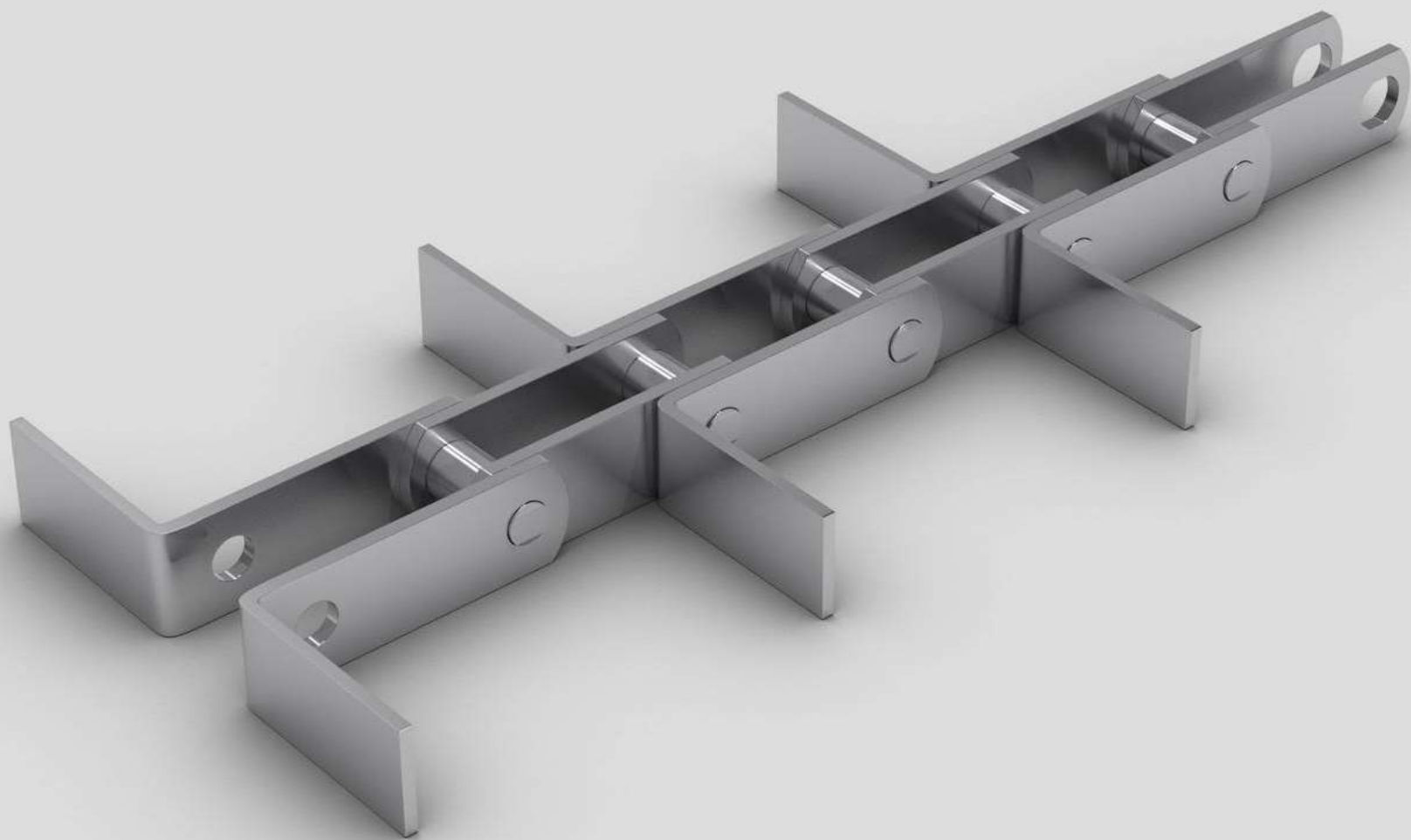


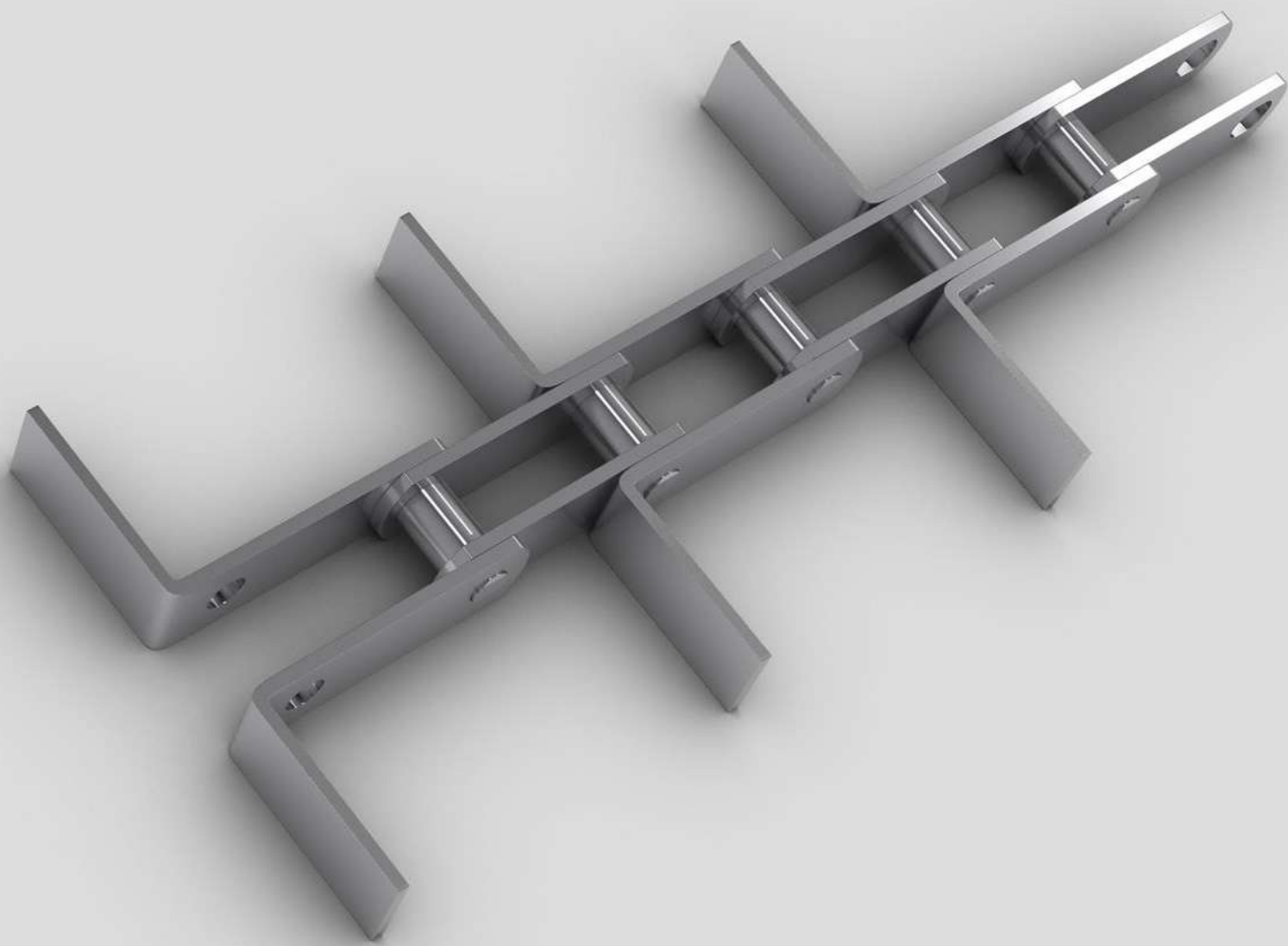
REDLER type chains



This kind of chains are used to transport different kind of fodder, flour, granulated products, or biomass. This kind of chains are of very long durability and reliability.







# Sprocket wheels

for different kind of chains

Sprocket wheels are produced according to norms and with precise CNC machine tooling.



Proper heat treatment  
makes them reliable  
even in rough working  
environment



Teeth of sprocket wheels  
are induction hardened  
what makes them more  
reliable





Sprocket wheels can  
be with hub or without  
hub



# Sprocket wheels

Star wheels

They are produced as a divided wheel type. It makes replacement process more easier.



Sprocket wheels  
are heat treated to  
be more reliable  
and to increase their  
durability



# Special sprocket wheels

Special sprocket  
wheels are made  
according to our  
clients' technical  
documentation





Sprocket wheels can be heat treated, black oxide treated. They can be produced with a demanded by our clients material



Industrial branches that we  
cooperate with for a long time  
are:



Automotive







Cement production







# Steel mills







Chemical branch





# Construction and building branch







# Power plants







**KGHM**  
POLSKA MIEDŹ S.A.







Machine branch

**CATERPILLAR**

**KGHM**  
**ZANAM**

**bumar**







...and many many more.

For more information visit

<https://www.janus.com.pl/en/contact/>



A high-angle, top-down photograph of two men in dark business suits shaking hands on a light-colored tiled floor. The man on the left is seen from the back, while the man on the right is seen from the side, looking towards the handshake. The lighting is soft, and the overall tone is professional and welcoming.

# You are always welcome

[grzegorz.kozak@janus.com.pl](mailto:grzegorz.kozak@janus.com.pl)  
(+48) 604-212-569